

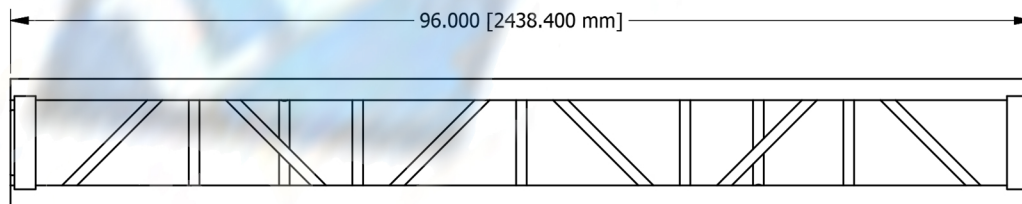
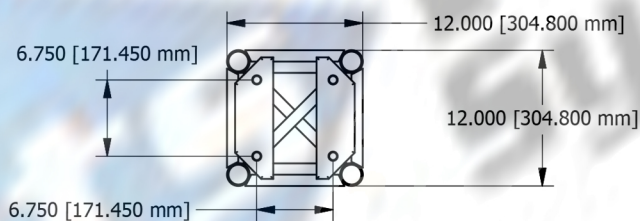
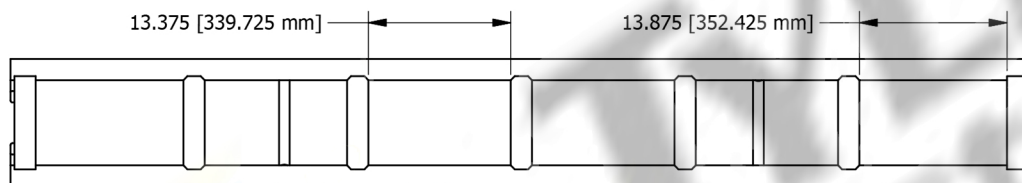
### 12" x 12" x 96" Standard Bolt Plate Truss Load Capacity Table (Repetitive Use)

TRUSS SPAN	UNIFORMLY DISTRIBUTED LOAD		CENTER POINT LOAD		THIRD POINT LOAD		QUARTER POINT LOAD	
	LOAD (pfl)	DEFL. (in)	LOAD (lbs)	DEFL. (in)	LOAD (lbs)	DEFL. (in)	LOAD (lbs)	DEFL. (in)
8'-0"	408	0.093	1690	0.088	1145	0.093	940	0.088
16'-0"	153	0.389	1080	0.290	807	0.350	637	0.390
24'-0"	73	0.922	782	0.672	510	0.731	425	0.893
32'-0"	38	1.683	565	1.250	416	1.564	293	1.539
40'-0"	17	2.253	403	2.066	260	2.270	178	2.270

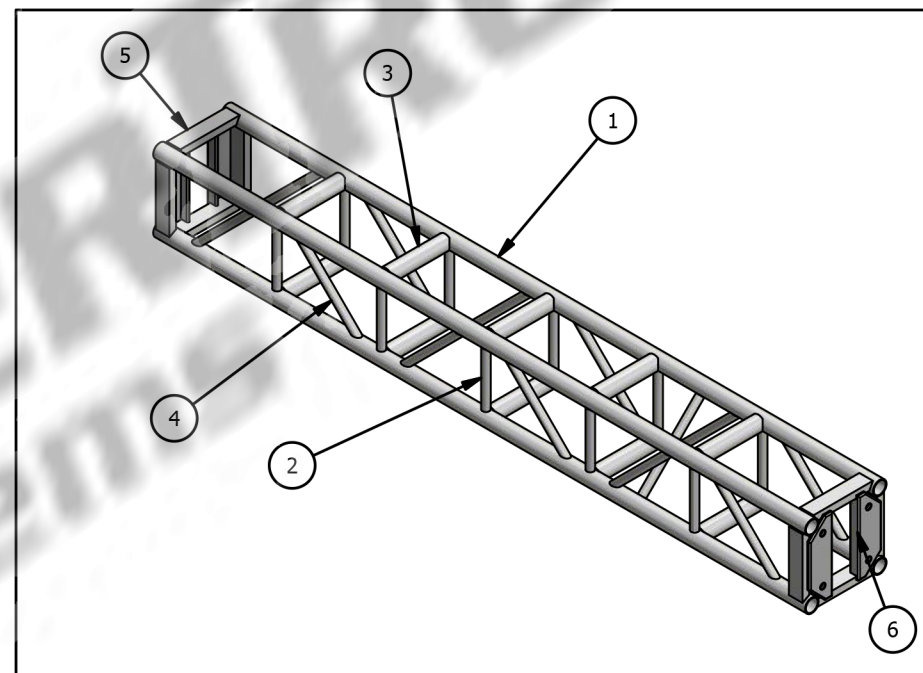
#### Table Usage Notes:

1. The truss is supporting vertical loads only, i.e. the truss diagonals are oriented vertically and no lateral loads are applied to the truss.
2. The truss is analyzed as a simple span beam. Truss support points are located at truss panel points.
3. The truss has been analyzed for static loads only.
4. All loads are applied at the centroid of the truss between the two ladder trusses below the truss.
5. All loads are applied at the panel points of the truss as to not induce local bending stresses in the chords.
6. All capacities are reduced by 0.85 per ANSI E1.2-2012 for repetitive use members.
7. Selfweight has been considered.
8. Maximum deflection limited to span/180.
9. Allowable loads based on 2010 Aluminum Design Manual.

Information extracted from the structural report by:



PARTS LIST		
ITEM	PART NUMBER	DESCRIPTION
1	CHORDS	Ø2" X .125" ALUMINUM TUBE
2	VERTICALS	Ø1" X .125" ALUMINUM TUBE
3	HORIZONTALS	Ø2" X .125" ALUMINUM TUBE
4	DIAGONALS	Ø1" X .125" ALUMINUM TUBE
5	INTERNAL DIAGS	Ø1" X .125" ALUMINUM TUBE
6	ENDS	1" X 2" X .125" ALUMINUM TUBE
7	SMALL CAMLOCK	.375" ALUMINUM



#### Notes:

TITLE: 12" X 12" X 96" STANDARD TRUSS

WEIGHT: 54 lbs

CREATION DATE: 02/27/2014

AUTHOR: NATHAN V

TOLERANCE: +/- 0.010 (0.254mm) U.O.S

REVISION: A



1810 Fairfield Ln, Pendleton, Indiana, 46064

765-221-5050