

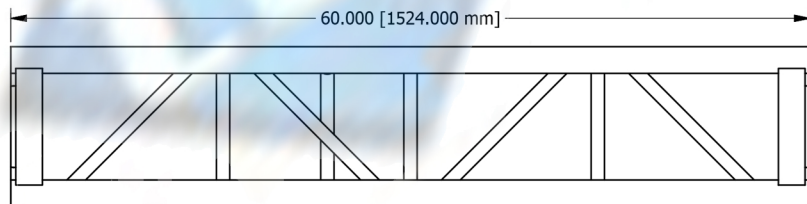
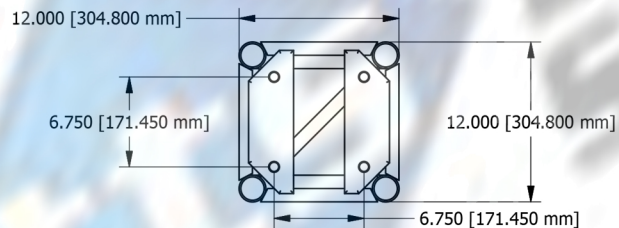
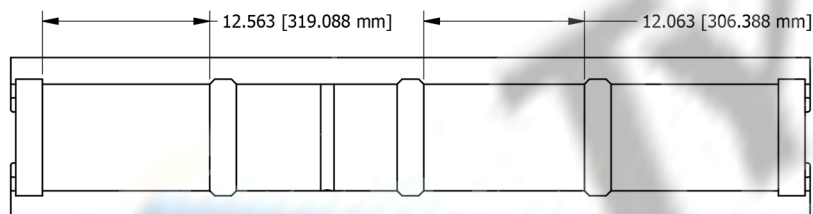
12" x 12" x 60" Standard Bolt Plate Truss Load Capacity Table (Repetitive Use)

TRUSS SPAN	UNIFORMLY DISTRIBUTED LOAD		CENTER POINT LOAD		THIRD POINT LOAD		QUARTER POINT LOAD	
	LOAD (p/ft)	DEFL. (in)	LOAD (lbs)	DEFL. (in)	LOAD (lbs)	DEFL. (in)	LOAD (lbs)	DEFL. (in)
5'-0"	884	0.043	2160	0.038	N/A	N/A	1165	0.043
10'-0"	352	0.152	1590	0.118	1190	0.151	875	0.145
15'-0"	192	0.357	1230	0.257	800	0.272	740	0.350
20'-0"	114	0.670	970	0.462	663	0.564	518	0.575
25'-0"	70	1.023	782	0.745	573	0.942	420	0.949
30'-0"	45	1.482	637	1.117	459	1.199	331	1.377
35'-0"	29	1.983	510	1.563	386	1.983	259	1.889
40'-0"	17	2.264	403	2.111	246	2.248	178	2.250

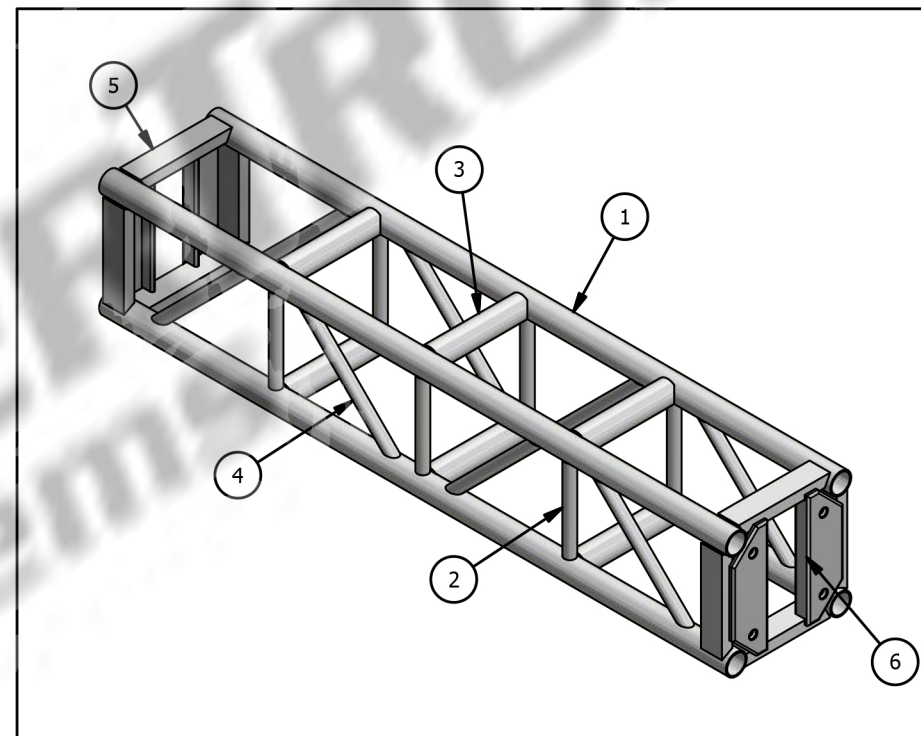
Table Usage Notes:

1. The truss is supporting vertical loads only, i.e. the truss diagonals are oriented vertically and no lateral loads are applied to the truss.
2. The truss is analyzed as a simple span beam. Truss support points are located at truss panel points.
3. The truss has been analyzed for static loads only.
4. All loads are applied at the centroid of the truss between the two ladder trusses below the truss.
5. All loads are applied at the panel points of the truss as to not induce local bending stresses in the chords.
6. All capacities are reduced by 0.85 per ANSI E1.2-2012 for repetitive use members.
7. Selfweight has been considered.
8. Maximum deflection limited to span/180.
9. Allowable loads based on 2010 Aluminum Design Manual.

Information extracted from the structural report by:



PARTS LIST		
ITEM	PART NUMBER	DESCRIPTION
1	CHORDS	Ø2" X .125" ALUMINUM TUBE
2	VERTICALS	Ø1" X .125" ALUMINUM TUBE
3	HORIZONTALS	Ø2" X .125" ALUMINUM TUBE
4	DIAGONALS	Ø1" X .125" ALUMINUM TUBE
5	INTERNAL DIAGS	Ø1" X .125" ALUMINUM TUBE
6	ENDS	1" X 2" X .125" ALUMINUM TUBE
7	SMALL CAMLOCK	.375" ALUMINUM



Notes:

TITLE: 12" X 12" X 60" STANDARD TRUSS

WEIGHT: 38 lbs

CREATION DATE: 12/01/2012

AUTHOR: NATHAN V

TOLERANCE: +/- 0.010 (0.254mm) U.O.S

REVISION: A



1810 Fairfield Ln, Pendleton, Indiana, 46064
765-221-5050