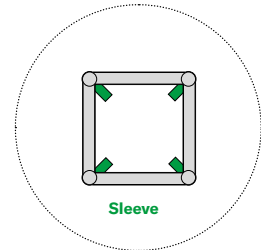
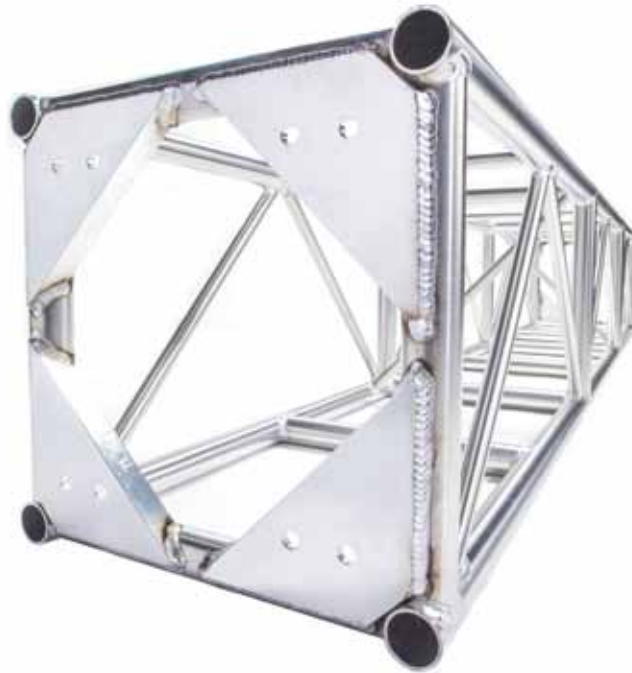


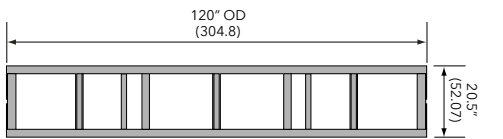
Box truss

Medium-duty truss 20.5 x 20.5 plated

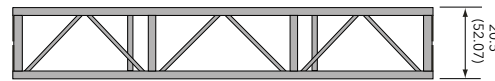
- › Medium-duty truss 20.5 x 20.5 plated
- › Standard lengths are 10', 8', 6', 5', 4', 3', 2'
- › Custom lengths available upon request
- › Equipped with bolts
- › Main chords are 2" OD x 1/8" aluminum
- › Diagonals are 1" OD x 1/8" aluminum
- › Studio version available with 2" OD x 3/16" main chords
- › Available with casters
- › Fabricated by AWS / SFL certified welders



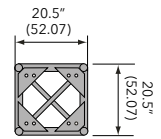
Plan Views - 5-Way & 6-Way Corners Available



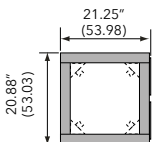
Plan



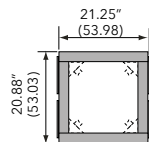
Elevation



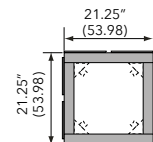
End View



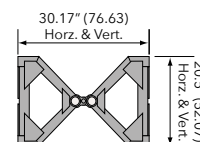
2-Way Corner Block



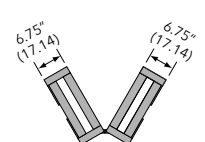
3-Way Corner Block



4-Way Corner Block



Center Pivot Horiz. Articulating Block



Horizontal Variable Corner

Loading chart

Span feet (meters)	Maximum allowable uniform loads			Maximum allowable point loads					
	Load lbs/ft	Load lbs (kgs)	Max Defl. in.	center point	Max Defl. in.	third point	Max Defl. in.	quarter point	Max Defl. in.
10 (3.05)	839	8390 (3806)	0.08	4744 (2152)	0.07	3558 (1614)	0.09	2372 (1076)	0.08
20 (6.09)	230	4600 (2087)	0.34	2306 (1046)	0.27	1729 (784)	0.35	1153 (523)	0.32
30 (9.14)	97	2910 (1320)	0.76	1464 (664)	0.62	1098 (498)	0.78	732 (332)	0.73
40 (12.21)	51	2040 (925)	1.36	1021 (463)	1.13	765 (347)	1.39	510 (231)	1.30
50 (15.24)	29	1450 (658)	2.10	737 (334)	1.80	553 (251)	2.16	369 (167)	2.05

Note: Deflections reported in the tables on the left are the maximum expected for full loadings (indoor only). All loads are based on 10' (3.05 m) sections. Other section lengths are available. Load tables are reprinted from engineering reports developed by Parkhill, Smith & Cooper, Inc., Structural Engineers, and apply to truss fabricated after December 1989.

Medium-duty truss 20.5 x 20.5 plated End plates equipped for double sets of bolts, supplied with one set only

Product Description	Item Code	Weight lbs (kgs)
2 FT MEDIUM-DUTY PLATED TRUSS	TC 2020-024B	34 (15)
3 FT MEDIUM-DUTY PLATED TRUSS	TC 2020-036B	39 (18)
4 FT MEDIUM-DUTY PLATED TRUSS	TC 2020-048B	51 (23)
5 FT MEDIUM-DUTY PLATED TRUSS	TC 2020-060B	56 (25)
6 FT MEDIUM-DUTY PLATED TRUSS	TC 2020-072B	59 (27)
8 FT MEDIUM-DUTY PLATED TRUSS	TC 2020-096B	77 (35)
10 FT MEDIUM-DUTY PLATED TRUSS	TC 2020-120B	85 (39)
2 FT MEDIUM-DUTY PLATED STUDIO TRUSS	TC 20ST-024B	37 (17)
3 FT MEDIUM-DUTY PLATED STUDIO TRUSS	TC 20ST-036B	43 (20)
4 FT MEDIUM-DUTY PLATED STUDIO TRUSS	TC 20ST-048B	59 (27)
5 FT MEDIUM-DUTY PLATED STUDIO TRUSS	TC 20ST-060B	66 (30)
6 FT MEDIUM-DUTY PLATED STUDIO TRUSS	TC 20ST-072B	73 (33)
8 FT MEDIUM-DUTY PLATED STUDIO TRUSS	TC 20ST-096B	91 (42)
10 FT MEDIUM-DUTY PLATED STUDIO TRUSS	TC 20ST-120B	102 (47)
MEDIUM-DUTY PLATED 2-WAY CORNER BLOCK	TC 2020-C2B	31 (14)
MEDIUM-DUTY PLATED 3-WAY CORNER BLOCK	TC 2020-C3B	32 (15)
MEDIUM-DUTY PLATED 4-WAY CORNER BLOCK	TC 2020-C4B	39 (18)
MEDIUM-DUTY PLATED 5-WAY CORNER BLOCK	TC 2020-C5B	52 (24)
MEDIUM-DUTY PLATED 6-WAY CORNER BLOCK	TC 2020-C6B	58 (27)
MEDIUM-DUTY PLATED HORIZ. ARTICULATING BLOCK	TC 2020-AHB	59 (27)
MEDIUM-DUTY PLATED VERT. ARTICULATING BLOCK	TC 2020-AVB	59 (27)
MEDIUM-DUTY PLATED VARIABLE HORIZ. BLOCK	TC 2020-VHB	45 (21)
MEDIUM-DUTY PLATED VARIABLE VERT. BLOCK	TC 2020-VVB	45 (21)
MEDIUM-DUTY PLATED 2 WAY SLEEVE FOR 12" TOWER	TC 2020-S2B	43 (20)
MEDIUM-DUTY PLATED 3 WAY SLEEVE FOR 12" TOWER	TC 2020-S3B	50 (23)
MEDIUM-DUTY PLATED 4 WAY SLEEVE FOR 12" TOWER	TC 2020-S4B	56 (26)