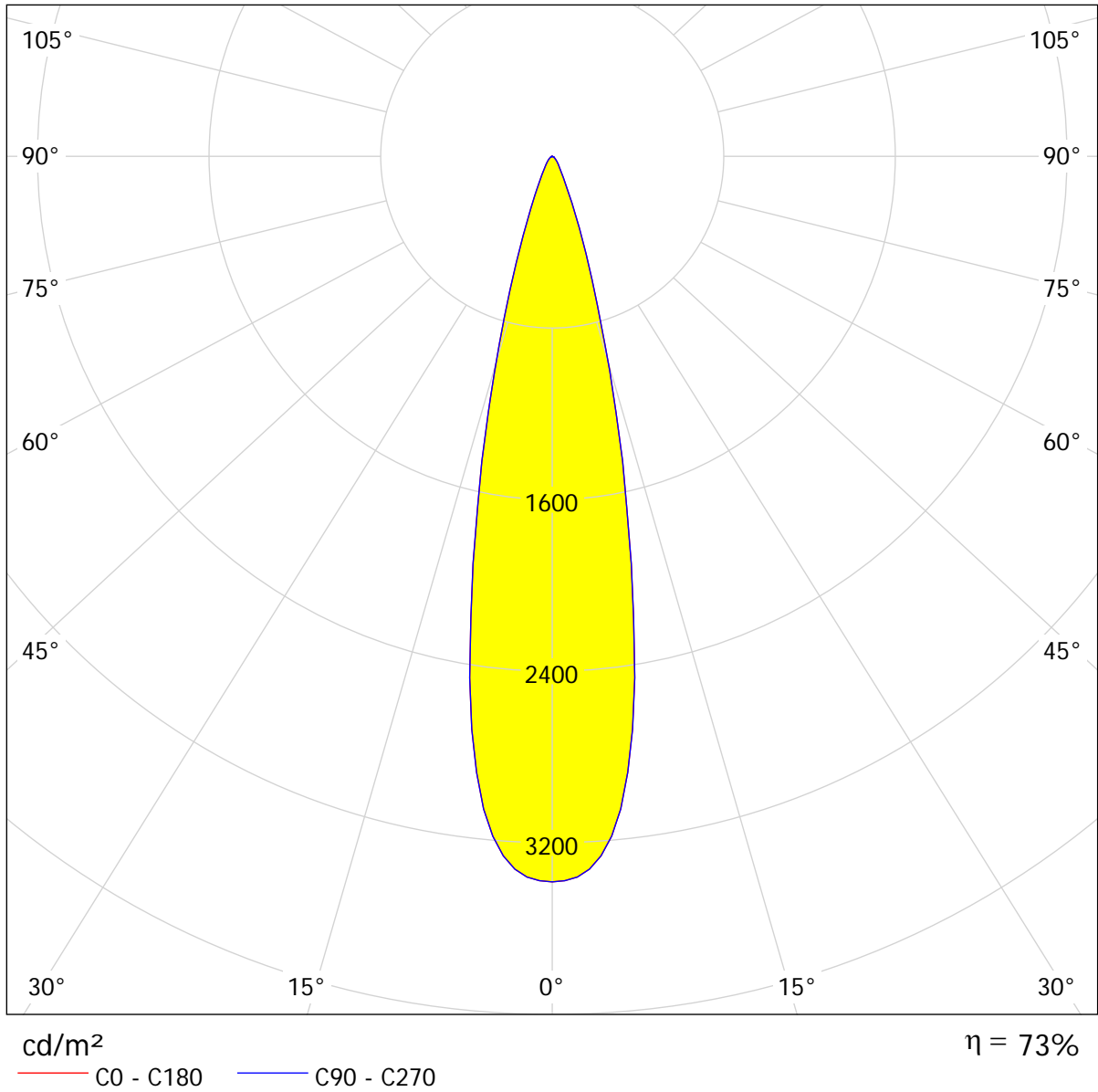


Operator  
Telephone  
Fax  
e-Mail

### Robe P CityScape Xtreme RGBCW 24°Spread lens HALF / LDC (Polar)

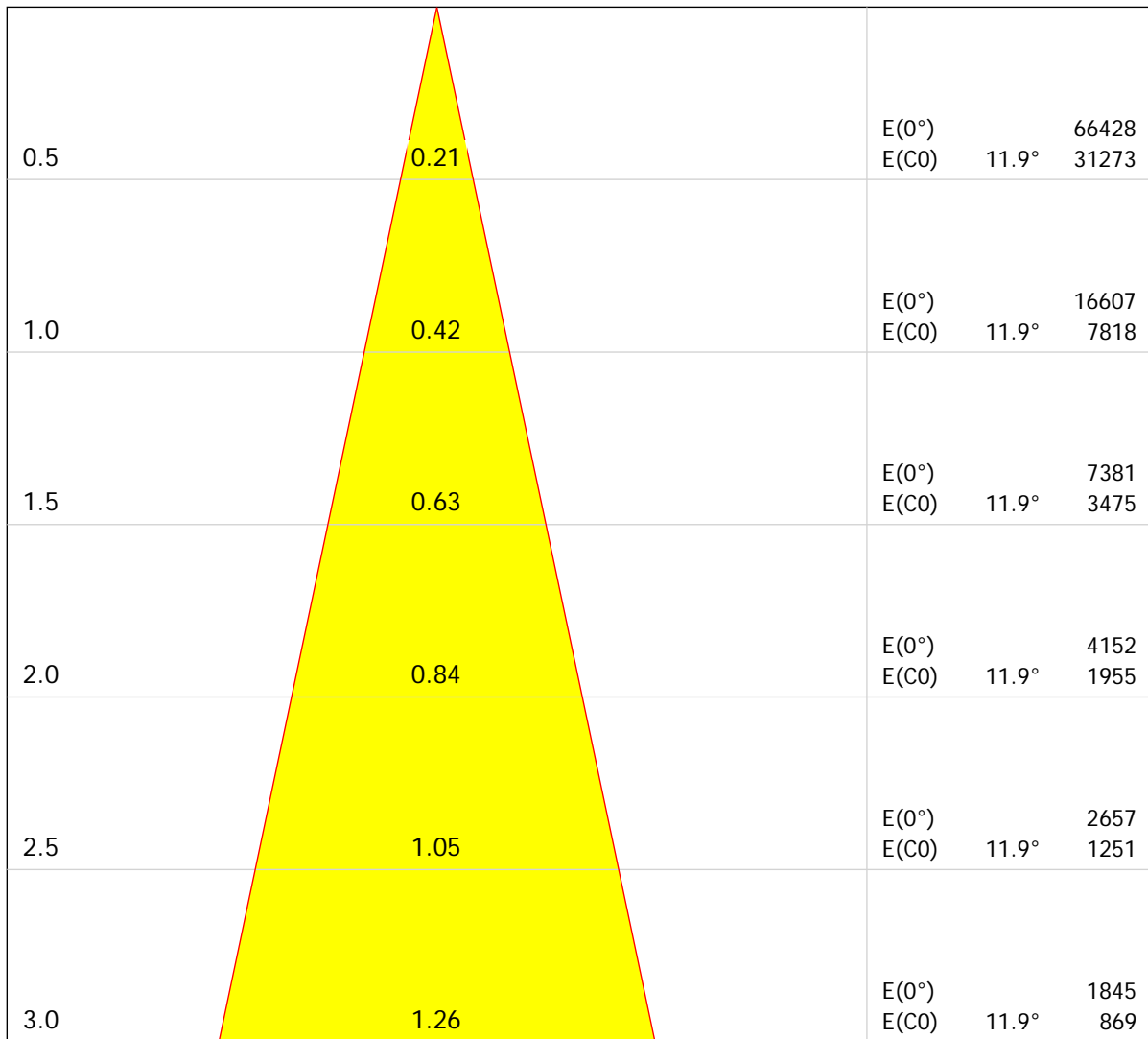
Luminaire: Robe P CityScape Xtreme RGBCW 24°Spread lens HALF  
Lamps: 94 x Luxeon K2



Operator  
Telephone  
Fax  
e-Mail

## Robe P CityScape Xtreme RGBCW 24°Spread lens HALF / Cone Diagram

Luminaire: Robe P CityScape Xtreme RGBCW 24°Spread lens HALF  
Lamps: 94 x Luxeon K2



Distance [m]                      Cone Diameter [m]

Illuminance [lx]

— CO - C180 (Half-value Angle: 23.8°)

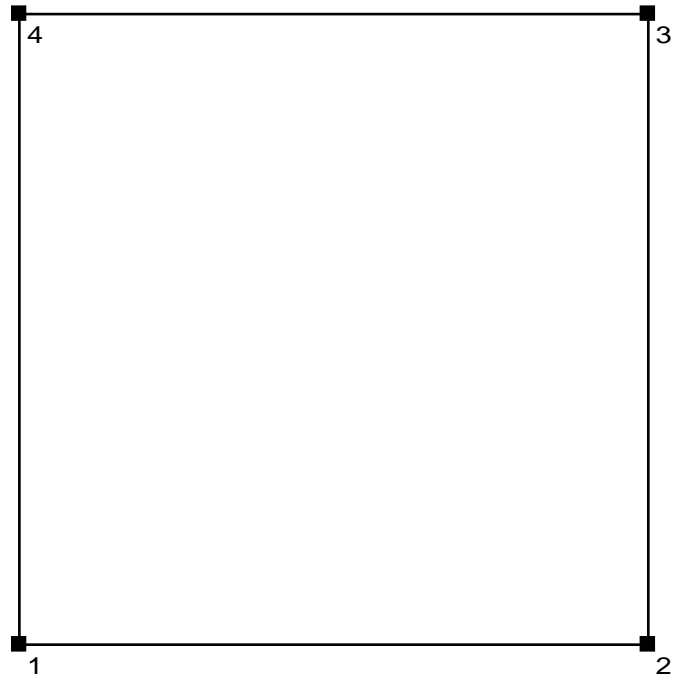
Operator  
Telephone  
Fax  
e-Mail

## Room 1 / Input Protocol

Height of working plane: 0.850 m  
Boundary Zone: 0.000 m

Maintenance factor: 0.80

Height of Room: 2.800 m  
Ground area: 25.00 m<sup>2</sup>



Surface	Rho [%]	from ( [m]   [m] )	towards ( [m]   [m] )	Length [m]
Floor	20	/	/	/
Ceiling	70	/	/	/
Wall 1	50	( 0.000   0.000 )	( 5.000   0.000 )	5.000
Wall 2	50	( 5.000   0.000 )	( 5.000   5.000 )	5.000
Wall 3	50	( 5.000   5.000 )	( 0.000   5.000 )	5.000
Wall 4	50	( 0.000   5.000 )	( 0.000   0.000 )	5.000

Operator  
Telephone  
Fax  
e-Mail

## Room 1 / Photometric Results

Total Luminous Flux: 4910 lm  
Total Load: 298.0 W  
Maintenance factor: 0.80  
Boundary Zone: 0.000 m

Surface	Average illuminances [lx]			Reflection factor [%]	Average luminance [cd/m <sup>2</sup> ]
	direct	indirect	total		
Workplane	116	9.02	125	/	/
Floor	110	8.38	118	20	7.53
Ceiling	0.00	15	15	70	3.35
Wall 1	2.16	11	13	50	2.14
Wall 2	2.13	11	13	50	2.14
Wall 3	2.16	11	13	50	2.14
Wall 4	2.13	11	13	50	2.13

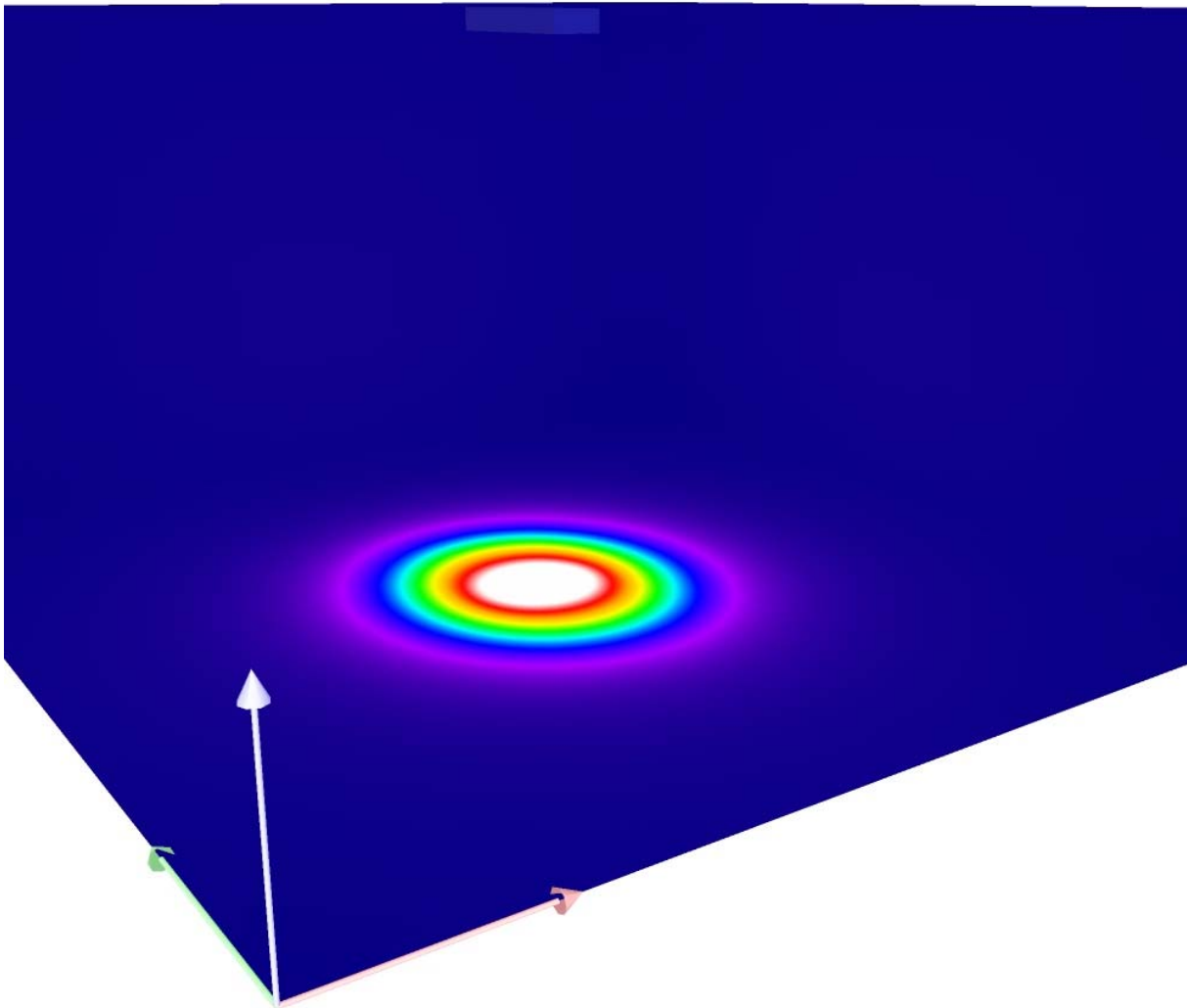
Uniformity on the working plane  
u<sub>0</sub>: 0.063 (1:16)  
E<sub>min</sub> / E<sub>max</sub>: 0.002 (1:443)

**UGR**      Lengthways-      Across      to luminaire axis  
Left Wall      <10      <10  
Lower Wall      <10      <10  
(CIE, SHR = 0.25.)

Specific connected load: 11.92 W/m<sup>2</sup> = 9.52 W/m<sup>2</sup>/100 lx (Ground area: 25.00 m<sup>2</sup>)

Operator  
Telephone  
Fax  
e-Mail

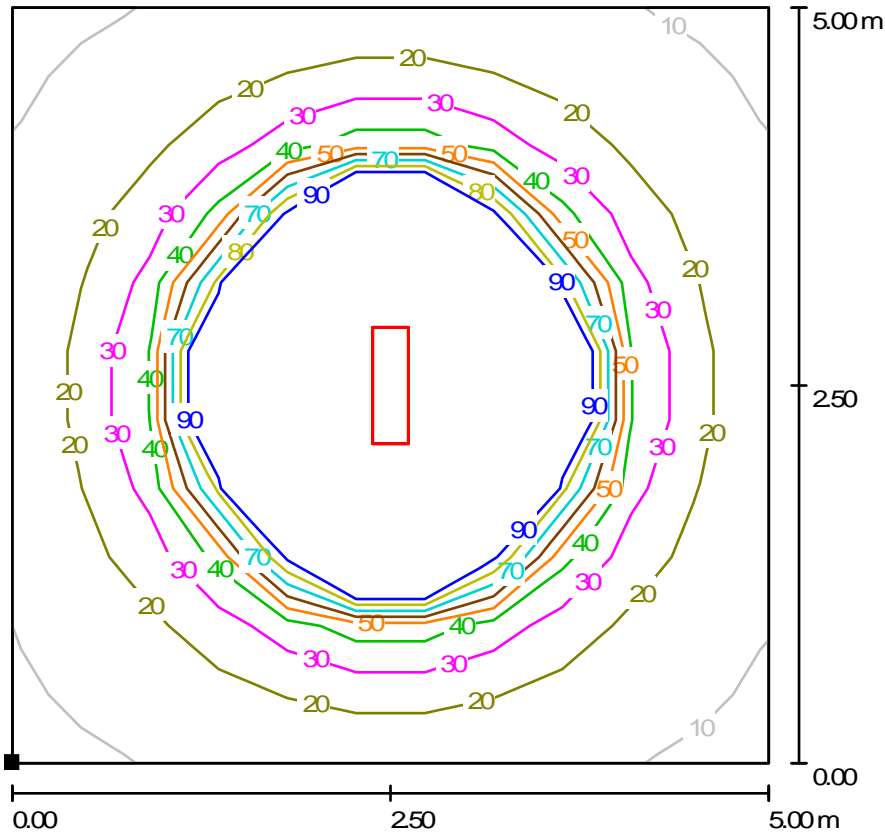
**Room 1 / False Colour Rendering**



0      187.50      375      562.50      750      937.50      1125      1312.50      1500      lx

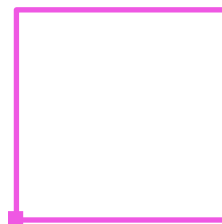
Operator  
Telephone  
Fax  
e-Mail

**Room 1 / Floor / Isolines (E)**



Values in Lux, Scale 1 : 50

Position of surface in room:  
Marked point:  
(0.000 m, 0.000 m, 0.000 m)

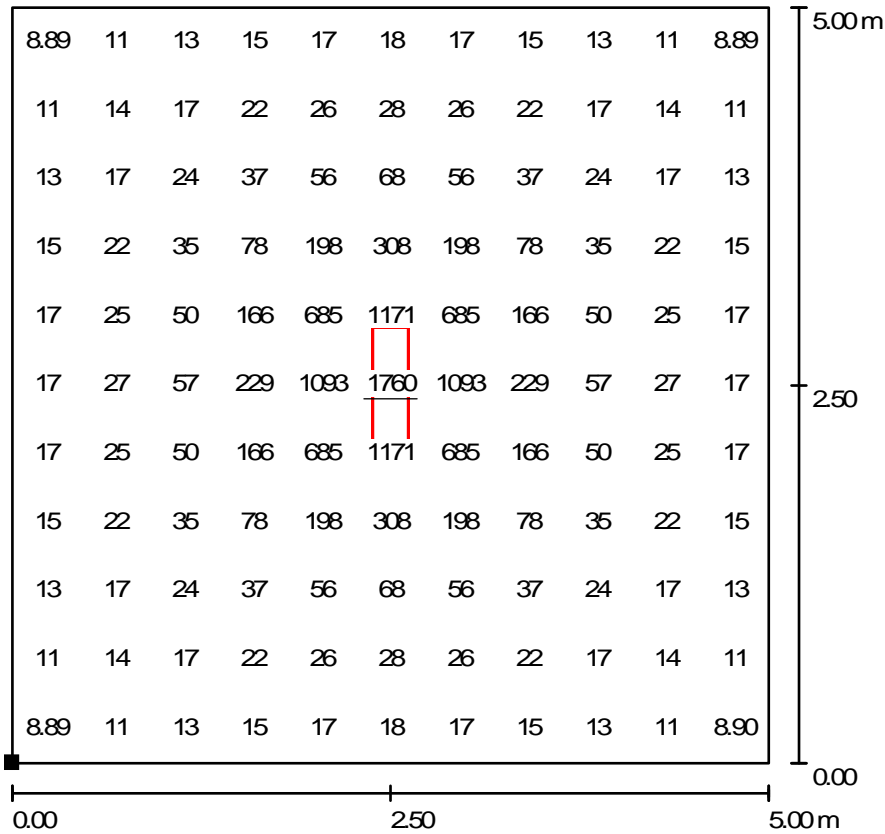


Grid: 11 x 11 Points

$E_{av}$ [lx]	$E_{min}$ [lx]	$E_{max}$ [lx]	$u_0$	$E_{min} / E_{max}$
118	8.29	1760	0.070	0.005

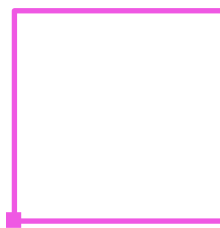
Operator  
Telephone  
Fax  
e-Mail

**Room 1 / Floor / Value Chart (E)**



Values in Lux, Scale 1 : 50

Position of surface in room:  
Marked point:  
(0.000 m, 0.000 m, 0.000 m)



Grid: 11 x 11 Points

$E_{av}$  [lx]  
118

$E_{min}$  [lx]  
8.29

$E_{max}$  [lx]  
1760

$u_0$   
0.070

$E_{min} / E_{max}$   
0.005