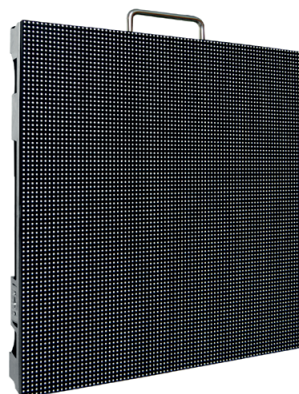
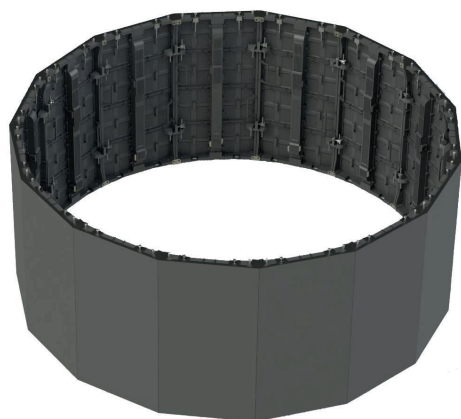


# 3.9mm Curve LED



## GENERAL SPECIFICATION



### MODULE

Dimensions	250*500	Resolution (w x h)	64*128
Pixel pitch	3.91mm	Pixel Density	65,536/m2
Driving IC	High refresh rate	Pixel Configuration	SMD 3 in 1

### PANEL

Dimensions	500*500	Module Quantity	2
Physical Resolution	128 x 128	Physical Pixels (Total)	16384
Weight/Panel (Kg)	8	Material Aluminium	Aluminium
Average Power/sqm(Watts)	200	Max Power/sqm(Watts)	500

### DISPLAY

Dimensions (W x H x D) (mm)	500*500	Module Quantity	2
Physical Resolution (w x h)	128 x 128	Physical Pixels (Total)	16384
Weight/Panel (Kg)	8	Material Aluminium	Aluminium
Average Power/sqm(Watts)	200	Max Power/sqm(Watts)	500

## ORDER WITH US TODAY

P: +44 (0) 1279 624 840 E: [europe@4wall.com](mailto:europe@4wall.com) W: [www.4wall.com](http://www.4wall.com)

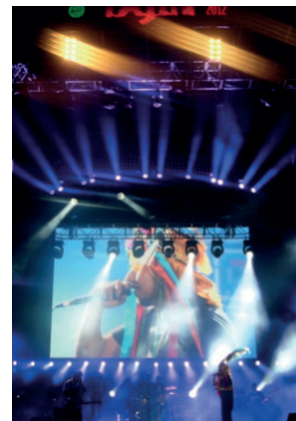
VIDEO | LIGHTING | RIGGING

# 3.9mm Curve LED



## SCREEN

Brightness	1300cd/m2
Viewing Angle	Horizontal 140(+70/-70)deg. Vertical 140(+70/-70)deg.
Minimum Viewing Distance	3.91m
Brightness Control	256 level
Gray scale	65536 level
Refresh frequency	<4800Hertz
Driving mode	Dynamic scan constant current driving
Input power frequency	50 or 60 Hertz
Input Voltage	110 ~ 240 Volt
Blind spot rate	<1/10000
Lifetime at 50% brightness	100000 hours
Ingress Protection	IP20
Operating temperature	- 20 ~+50 °C
Operating humidity	10% ~ 90%
Control distance	CAT5 cable:<100m; Single mode fiber:<10km
Signal input format	AV, S-Video, VGA, DVI, YPbPr, HDMI, SDI
Operating system	Windows (7/2000/XP/Vista)



## KEY FEATURES

### ▪ CURVED DISPLAY

The new 3.9 CURVE is built with curved locks and a cabinet structure, allowing it to be created as curved in both convex and concave formation.

### ▪ SUPER-HIGH RESOLUTION

One of the highest resolutions on the current rental market with a pixel pitch of just 3.9mm. Unlike traditional LED walls, this solution is able to retain its clarity even when visitors are located in close proximity to the screen.

### ▪ WIDE VIEWING ANGLES

This screen also has super-wide viewing angle, which allows viewing of the screen from acute angles without any shadow and has a variable refresh rate of between 4800 Hertz, ensuring that the technology is suitable for TV and film work.

### ▪ LIGHTWEIGHT

Each cabinet weighs just 8kg with a panel dimension of 500mm x 500mm, ensuring a simple and lightweight setup in a stand design or event of any shape or size.

### ▪ REVOLUTIONARY DESIGN

Each lockable cabinet of LED we offer weighs just 8.5g with easy lock-in mechanism to ensure that panels can be easily replaced with minimal disruption to the final design.

## ORDER WITH US TODAY

P: +44 (0) 1279 624 840 E: [europe@4wall.com](mailto:europe@4wall.com) W: [www.4wall.com](http://www.4wall.com)

VIDEO | LIGHTING | RIGGING