



KINO FLO[®]
Lighting Systems

celeb[®] 401

LED



Celeb[®] 401 DMX LED



The Celeb[®] 401 DMX LED features new technical innovations that make it an ideal professional imaging tool: dial-in white light from 2700 to 6500 Kelvin, presets and programmable settings, full range dimming and DMX wireless link capability.

With soft, even True Match[®] light quality (CRI 95), the Celeb 401 runs on universal input from 100VAC-240VAC or 24VDC. The slim profile fixture produces more lumens than a 1K tungsten softlight, yet uses only 1.8A (120VAC) compared to a tungsten softlight at 8.3A. The soft, beauty light doesn't flicker or shift color when dimmed. Light levels do not change when selecting Kelvin settings. With a Lumen Radio transmitter, the Celeb 401 can operate on DMX wireless.

The Celeb comes with molded accessory holders, removable gel frame, focusing louver and comes in Center Mount, Yoke Mount and Pole-Op.

Features include:

- Kelvin presets and custom settings between 2700K-6500K
- Universal Input 100VAC-240VAC or 24VDC
- Onboard and DMX dimming w/ Auto Terminate
- DMX wireless link (Lumen Radio)
- Flicker-free, dead quiet operation
- Gel Frame and Honeycomb Louver
- Center Mount, Yoke Mount and Pole-Op

▼ Celeb 401 DMX LED Center

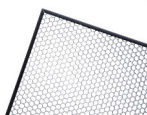


CEL-401C-120U
Celeb 401 DMX
Center Mount, Univ 120U

CEL-401C-230U
Celeb 401 DMX
Center Mount, Univ 230U



GFR-CE4
Celeb 401 Gel Frame
(Included)



LVR-CE490-P
Celeb 401 Louver/HP, 90°
(Included)



MITP-LM
Kino 81 Lollipop w/
Junior Pin (28mm)
(Included)

▼ Celeb 401 DMX LED Yoke



CEL-401Y-120U
Celeb 401 DMX
Yoke Mount, Univ 120U

CEL-401Y-230U
Celeb 401 DMX
Yoke Mount, Univ 230U

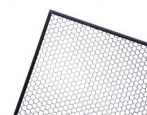


CEL-401P-120U
Celeb 401 DMX
Pole-Op, Univ 120U

CEL-401P-230U
Celeb 401 DMX
Pole-Op, Univ 230U



GFR-CE4
Celeb 401 Gel Frame
(Included)



LVR-CE490-P
Celeb 401 Louver/HP, 90°
(Included)

▼ Photometrics

Celeb 401	FC	858	279	134	77	41	36	27	20	17	14
	Feet	2	4	6	8	10	12	14	16	18	20
	LUX	11900	4190	2070	1210	791	560	387	331	269	217
	Meters	0.5	1	1.5	2	2.5	3	3.5	4	4.5	5

▼ Fixture Specifications

Fixture	Input Voltage VAC	Amps VAC	Input Voltage VDC	Amps 24VDC	Kelvin Range	Dimming Range	Dimensions	Weight
Celeb 401 DMX Center	100-240VAC, 50/60Hz, 210W	1.8A	18-28VDC, 198W	8.25A	2700-6500	100%-1%	45 x 14 x 5" (114.5 x 36 x 13cm)	26 lb (12kg)
Celeb 401 DMX Center	240-100VAC, 50/60Hz, 207W	1.0A	18-28VDC, 198W	8.25A	2700-6500	100%-1%	45 x 14 x 5" (114.5 x 36 x 13cm)	26 lb (12kg)
Celeb 401 DMX Yoke	100-240VAC, 50/60Hz, 210W	1.8A	18-28VDC, 198W	8.25A	2700-6500	100%-1%	50 x 16.5 x 5" (127 x 42 x 13cm)	26 lb (12kg)
Celeb 401 DMX Yoke	240-100VAC, 50/60Hz, 207W	1.0A	18-28VDC, 198W	8.25A	2700-6500	100%-1%	50 x 16.5 x 5" (127 x 42 x 13cm)	26 lb (12kg)

▼ Details



Jeff Murrell



Trent Opaloch/Jeff Murrell



Bjorn Bruijn Plomp

▼ Celeb 401 DMX LED Kits



KIT-C401-120U
Celeb 401 DMX Center Mount Kit, Univ 120U

KIT-C401-230U
Celeb 401 DMX Center Mount Kit, Univ 230U

Contents
1 Celeb 401 DMX Center
1 Flight Case

Dimensions
53.5 x 11 x 16.5"
(136 x 28 x 42cm)
Weight
52.5 lb (24kg)

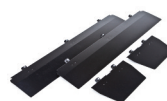
KIT-C401Y-120U
Celeb 401 DMX Yoke Mount Kit, Univ 120U

KIT-C401Y-230U
Celeb 401 DMX Yoke Mount Kit, Univ 230U

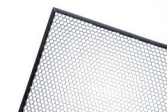
Contents
1 Celeb 401 DMX Yoke
1 Jr. Pin
1 Ship Case

Dimensions
54.5 x 9.5 x 25"
(138.5 x 24 x 63.5cm)
Weight
57 lb (26kg)

▼ Celeb 401 DMX LED Accessories/ Cases



BRD-CE4
Celeb 401 Barndoors
(Set of 4)



LVR-CE460-P
Celeb 401 Louver/HP, 60°



MTP-180
Junior Pin Assembly
for Yoke (28mm)



MTP-CE
Celeb Support w/ Pin



7010052
Celeb 401 Center Mount
Assembly



7010045
Celeb 401
Yoke Assembly



7010046
Celeb 401
Pole-Op Assembly



KAS-CE4
Celeb 401 Center Flight Case



KAS-CE4-Y
Celeb 401 Yoke Ship Case



Kino Flo Lighting Systems
2840 North Hollywood Way
Burbank, CA 91505

+1 818 767 6528 voice +1 818 767 7517 fax

www.kinoflo.com

© Kino Flo Celeb 401 DMX LED
No. 3110090 Rev B