

---

# Operation Manual

## Select LED 30/20



**KINO FLO®**  
Lighting Systems

# Select LED Systems



**SYS-S30-120U** Select LED 30 DMX System, Univ 120U  
**SYS-S30-230U** Select LED 30 DMX System, Univ 230U

**SYS-S20-120U** Select LED 20 DMX System, Univ 120U  
**SYS-S20-230U** Select LED 20 DMX System, Univ 230U

## Each Select LED System consists of:

- 1 LED Fixture
- 1 Mounting Plate
- 1 Extension Cable
- 1 LED Controller

# Select LED System Components



**CFX-SL30** Select LED 30 Fixture  
**CFX-SL20** Select LED 20 Fixture



**MTP-BC41** Kino 41K Mount w/  
Baby Receiver Curve (16mm)



**X12-25** Select 150 Extension, 25ft



**LED-150X-120U**  
Select LED 150 DMX Controller, Univ 120U

**LED-150X-230U**  
Select LED 150 DMX Controller, Univ 230U

# Select LED 30 DMX Kits



**Select LED 30  
DMX Kit w/ Soft Case**

**KIT-S30B-120U**

Select LED 30 DMX Kit, Univ 120U w/ Soft Case

**KIT-S30B-230U**

Select LED 30 DMX Kit, Univ 230U w/ Soft Case

**Kit Contents:**

- 1 Select LED 30 Fixture
- 1 Select LED 150 DMX Controller
- 1 MTP-BC41 Mount  
w/ Baby Receiver Curve (16mm)
- 1 Extension, 25ft
- 1 Soft Case

**Dimensions:**

42.5 x 7.5 x 16.5"  
(108 x 19 x 42cm)

**Weight:**

26 lb  
(12kg)



**Select LED 30  
DMX Kit w/ Flight Case**

**KIT-S30-120U**

Select LED 30 DMX Kit, Univ 120U w/ Flight Case

**KIT-S30-230U**

Select LED 30 DMX Kit, Univ 230U w/ Flight Case

**Kit Contents:**

- 1 Select LED 30 Fixture
- 1 Select LED 150 DMX Controller
- 1 MTP-BC41 Mount  
w/ Baby Receiver Curve (16mm)
- 1 Extension, 25ft
- 1 Flight Case

**Dimensions:**

46 x 11 x 16.5"  
(117 x 28 x 42cm)

**Weight:**

46.5 lb  
(21kg)



**Gaffer LED 30 DMX Kit  
(2-Unit)**

**KIT-S32-120U**

Gaffer LED 30 DMX Kit, Univ 120U (2-Unit)

**KIT-S32-230U**

Gaffer LED 30 DMX Kit, Univ 230U (2-Unit)

**Kit Contents:**

- 2 Select LED 30 Fixture
- 2 Select LED 150 DMX Controller
- 2 MTP-BC41 Mount  
w/ Baby Receiver Curve (16mm)
- 2 Extension, 25ft
- 1 Ship Case

**Dimensions:**

43.5 x 13 x 18.5"  
(110.5 x 33 x 47cm)

**Weight:**

69 lb  
(31kg)

# Select LED 20 DMX Kits



**Select LED 20  
DMX Kit w/ Soft Case**

## **KIT-S20B-120U**

Select LED 20 DMX Kit, Univ 120U w/ Soft Case

## **KIT-S20B-230U**

Select LED 20 DMX Kit, Univ 230U w/ Soft Case

### **Kit Contents:**

- 1 Select LED 20 Fixture
- 1 Select LED 150 DMX Controller
- 1 MTP-BC41 Mount  
w/ Baby Receiver Curve (16mm)
- 1 Extension, 25ft
- 1 Soft Case

### **Dimensions:**

- 31 x 7.5 x 18"
- (79 x 19 x 46cm)

### **Weight:**

- 23 lb
- (10.5kg)



**Select LED 20  
DMX Kit w/ Flight Case**

## **KIT-S20-120U**

Select LED 20 DMX Kit, Univ 120U w/ Flight Case

## **KIT-S20-230U**

Select LED 20 DMX Kit, Univ 230U w/ Flight Case

### **Kit Contents:**

- 1 Select LED 20 Fixture
- 1 Select LED 150 DMX Controller
- 1 MTP-BC41 Mount  
w/ Baby Receiver Curve (16mm)
- 1 Extension, 25ft
- 1 Flight Case

### **Dimensions:**

- 30 x 10.5 x 21"
- (76 x 27 x 53cm)

### **Weight:**

- 38 lb
- (17kg)



**Interview LED 20  
DMX Kit (2-Unit)**

## **KIT-S22-120U**

Interview LED 20 DMX Kit, Univ 120U (2-Unit)

## **KIT-S22-230U**

Interview LED 20 DMX Kit, Univ 230U (2-Unit)

### **Kit Contents:**

- 2 Select LED 20 Fixture
- 2 Select LED 150 DMX Controller
- 2 MTP-BC41 Mount  
w/ Baby Receiver Curve (16mm)
- 2 Extension, 25ft
- 1 Ship Case

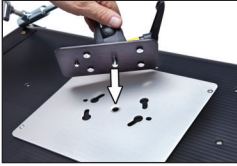
### **Dimensions:**

- 36 x 13 x 20.5"
- (91.5 x 33 x 52cm)

### **Weight:**

- 63.5 lb
- (29kg)

# Mounting the Fixture

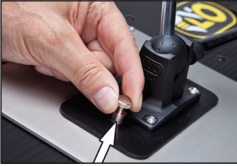


Align the center pin of the mounting plate to the center hole on the mating plate.

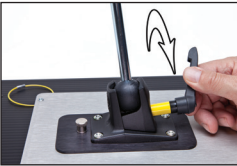
Rotate plate clockwise until the four shoulder rivets drop into the receptacle. A locking pin will snap into place when the plate is properly seated.



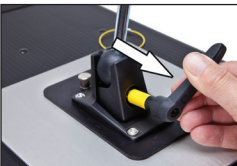
The **yellow wire loop** provides an attachment point for a safety chain.



**To remove the plate**, pull up on the locking pin and reverse the mounting procedure.



A 180° turn loosens the orientation of the mount. A right turn tightens the mount.



The tension on the lock lever may be adjusted by pulling the handle away from the mount.

This disengages the handle from the screw mechanism and allows the lever to be reoriented.



Lollipops are interchangeable.

**MTP-L** Kino 41 Lollipop w/ 3/8" Pin (10mm)

**MTP-LBC** Kino 41 Lollipop w/ Baby Rcvr Curve (16mm)

**MTP-LBS** Kino 41 Lollipop w/ Baby Rcvr Short (16mm)

# Mounting the Controller



Insert the 4 rubber feet of the controller into the 4 holes in the fixture.

Secure the Controller to the fixture with the Velcro fastening strap.



Connect the harness to the Controller. Align the key ways on the harness connector with the circular receptacle on the ballast. Rotate the silver locking ring until it clicks into the lock position.

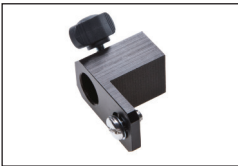
# Extension Cable



The Select LED fixture can be used with the controller directly attached or remotely, using a 25ft extension cable. Remote operation of the controller provides more rigging options.

To insert the cable, align the key ways on the extension cable with the circular receptacle on the controller. Rotate the silver locking ring until it clicks into the lock position.

# Mount Options



**MTP-BAL**



The Controller can be mounted to a stand with a ballast mount accessory, **MTP-BAL** and mafer clamp.

# Power



## AC Input

The Select LED 150 DMX Controller is powered AC and includes an IEC connection. It also includes a 12ft power cord with a locking IEC connector.

The Select LED 150 DMX Controller has a built-in power supply with universal input from 100-240VAC.

## Ambient Operating Temperature

The Select LED 150 DMX is designed to operate at temperatures from 14°F to 104°F (-10°C to 40°C).



## DC Input

The Select LED 150 DMX can also be operated on 24VDC (input range 18-36VDC) through a 3-Pin XLR. The pin polarity is:

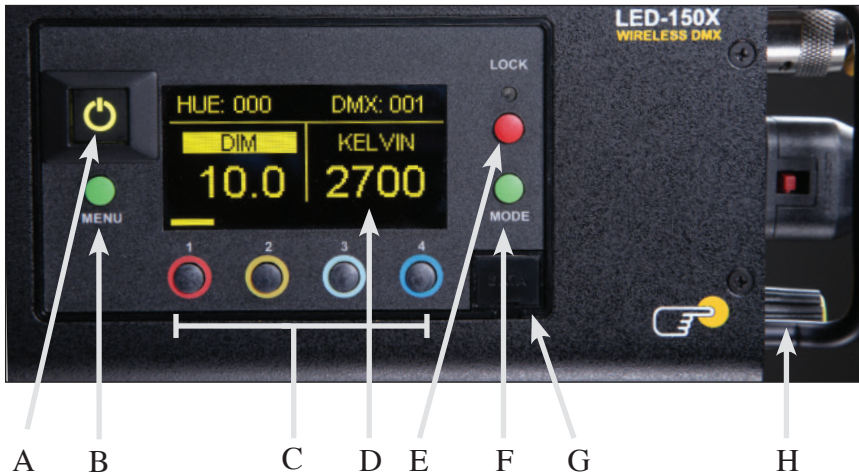
- Pin # 1 – Ground
- Pin # 2 + 18-36VDC
- Pin # 3 not used



## Note:

A low voltage warning will display if input DC voltage is under 18VDC. Photo example: **LOW VDC: 17**

# Select LED 150 DMX Control Panel

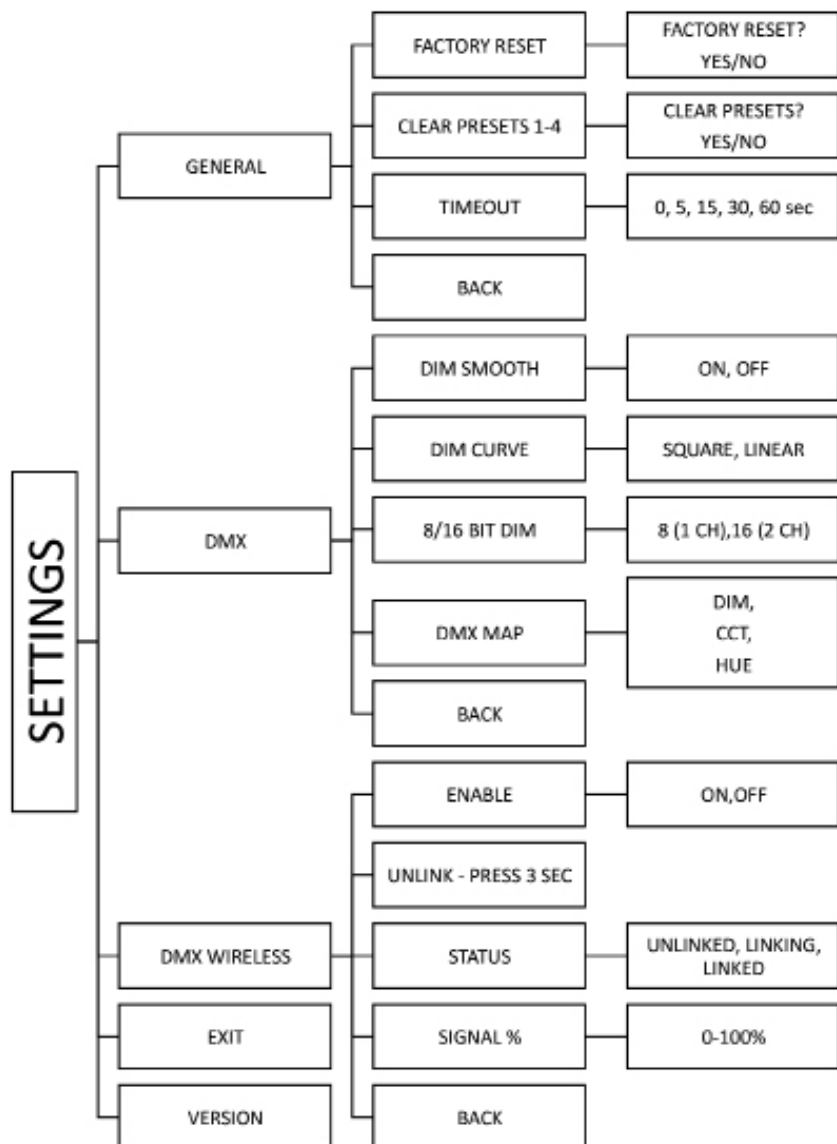


- A) On /Off:** **On** = Green light displayed. **Off** = Red light displayed.  
The display and all menu settings can be operated while the power button is in the **Off** position, as long as power is applied to the controller. The **On /Off** button only controls the light source.
- B) Menu:** Provides access to menu options such as General settings, DMX and DMX Wireless settings.
- C) Kelvin/Hue Preset Buttons:** Factory defaults left to right are: 2700K, 3200K, 5000K and 6500K; Hue value is 000. User can also use these preset buttons to store custom Kelvin and Hue settings.
- D) Display:** Provides access to Kelvin, Dim, Hue and DMX channel.  
Factory reset will show: Dim = 10%, Kelvin = 2700K, Hue = 000, DMX = 001.
- E) Lock:** Press the **Lock** button to disable all buttons and control knob.  
Press for 3 seconds to reset Kelvin/Hue preset buttons to factory settings.
- F) Mode:** Selects Hue, DMX, Dim and Kelvin settings. When in sub-menus, pressing Mode returns to main display.
- G) Data Port:** Mini B USB for software updates.
- H) Dimmer Knob:** Manually adjusts Kelvin, Dim, Hue levels and DMX channels. Press the knob to toggle between fine and coarse adjustments, or when selecting options within menus.

**DMX Note:** Each Select LED 150 DMX Controller has an “**AUTO TERMINATE**” feature. The last fixture that does not have an XLR cable attached to the DMX “Out” port will automatically terminate.



# Settings Overview



# Dimming



Press the Mode button to select **Dim**. Rotating the control knob will dim the light of the fixture. Default setting is Fine. Press the rotating knob once to shift to Coarse. When the power is turned off or removed, the display will remember its last setting.

# Kelvin Selection



Press the Mode button until **Kelvin** is highlighted. Presets:

- 1 = 2700K
- 2 = 3200K
- 3 = 5000K
- 4 = 6500K

Default setting is Fine. Press control knob to shift to Coarse. Rotating the control knob will change the Kelvin.



Kelvin custom settings between 2700K to 6500K and displayed Hue can be assigned to any preset button by holding down the desired button for 3 seconds. The Kelvin display will flash once the setting is registered.

To reset Kelvin and Hue to factory settings, press and hold the **Lock** button for 3 seconds or reset under General settings by choosing **Clear Presets 1-4**.

# Hue

The Select LED features a Green/Magenta control to match the spectral sensitive curves of most popular cameras and other light sources.



Green/Magenta Chart

100G	+1 Green
50G	+½ Green
25G	+¼ Green
25M	+¼ Magenta
50M	+½ Magenta
100M	+1 Magenta

Press the Mode button until **Hue** is highlighted. Rotating the control knob to the right will adjust the Hue towards Green. Rotating to the left will adjust the Hue towards Magenta. Default setting is Fine. Press the rotating knob to shift the **Hue** from Fine to Coarse increments.

Custom Hue settings and Kelvin settings can be assigned to any preset button (1-4) by holding down the desired button for 3 seconds. The display will flash once the setting is registered.

To reset Kelvin and Hue to factory presets, press and hold the Lock button for 3 seconds or clear presets under the General settings by choosing **Clear Presets 1-4**.

# Lock Mode



Press the **Lock** button to lock all buttons and control knob. A red indicator light will display in **Lock** mode. To unlock, press the **Lock** button again. The red indicator will turn off.

# DMX Operation



## DMX Operation

The Select LED operates on three DMX channels while in the default 8 Bit Dim mode. The first channel operates dimming; the 2nd channel operates Kelvin color temperature control from 2700K to 6500K; the 3rd channel operates the Hue. Once an address is selected, the fixture automatically assigns 3 consecutive channels.

Press the Mode button to select **DMX**. Turn the control knob to select a valid address from 1-512. (Note: 0 is an invalid address.)

The default setting is Fine (single digits). Press the control knob to shift to Coarse (in 10th's).

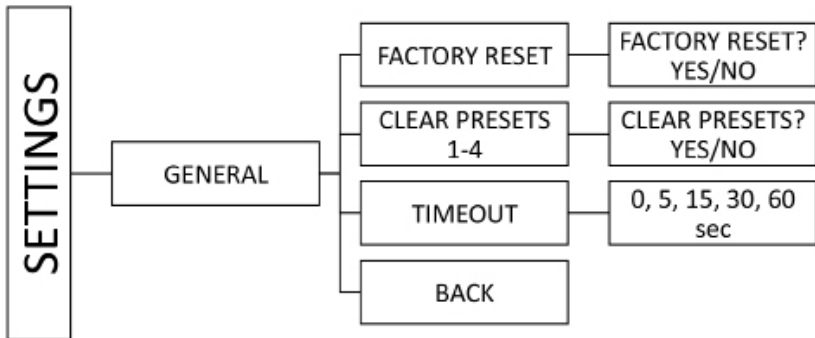
On the main display, "**X**" next to DMX indicates DMX signal is present.

All manual controls are disabled once the DMX cable is applied and valid DMX signal is being received. To regain manual control with the DMX cable plugged in, set the DMX address to "0".

Note: If a fixture loses its DMX signal, it will hold its last DMX command. For this reason, it is important to turn a fixture off using the DMX commands. For example, if you try to turn off the lights by turning off the dimmer board, the lights will remember their last DMX command and stay on. The fixtures require a DMX "Off" or "Black-Out" command in order to turn off.

**DMX Note:** Each Select LED 150 DMX Controller has an "**AUTO TERMINATE**" feature. The last fixture that does not have an XLR cable attached to the DMX "Out" port will automatically terminate.

# General Settings



## Factory Reset

To reset to factory settings, press the control knob and select Yes to confirm reset. Main display will default to: Dim = 10%, Kelvin = 2700K, Hue = 000 and DMX = 001.

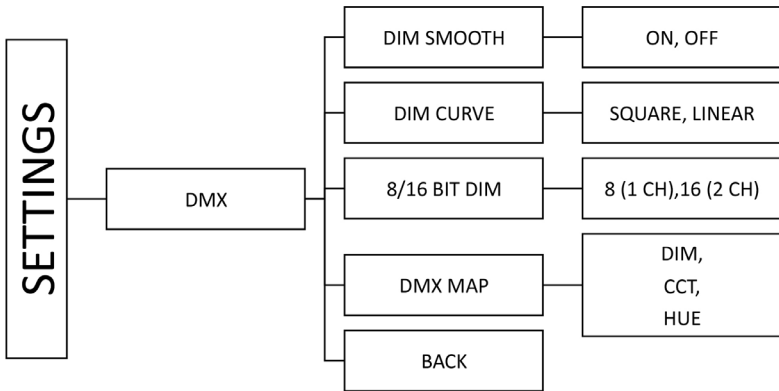
## Clear Presets 1-4

Will reset buttons 1-4: 2700, 3200, 5000, 6500. Hue will reset to 000.

## Timeout

When choosing settings, if there is no activity, the display will default to "Dim". The default is 5 seconds, but can be changed by pressing the control knob to 0, 5, 15, 30 and 60 seconds. Set to "0" if you want to disable Timeout feature.

# DMX Settings



## DIM Smooth

Default is **On**. Press control knob to turn **DIM Smooth Off** for instant response for special effects such as flashing, flickering, strobing, etc. For high speed cameras, it is recommended to keep **DIM Smooth On**.

## DIM Curve

Default is **Square**. Press control knob to change to **Linear**. **Dim Curve** applies to how the input DMX Dim command is applied. In **Linear** mode an address of 127 = 50% Dim. Because single channel DMX is only 8 bit (0-255), the lower end of the Dim curve has the same increment as the higher end. **Square Dim** applies  $x^2$  curve and allocates more values to the lower end of the Dim scale.

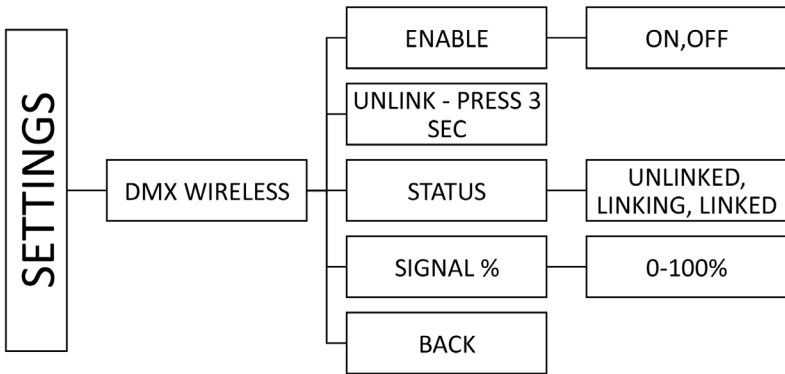
## 8/16 Bit DIM

Default is **8 Bit**. **16 Bit Dim** allocates an additional DMX channel for the Dim input, one channel for the upper 8 Bits and another channel for the lower 8 Bits.

## DMX Map

DMX Map displays DMX channel settings for **DIM**, **CCT** and **HUE**. **Note:** If **16 Bit Dim** is on, a total of 4 channels are displayed. The first 2 DMX channels are assigned to dimming. 1st channel = **DIM MSB** (Most Significant Byte); 2nd channel **DIM LSB** (Least Significant Byte); 3rd channel = **Kelvin**; 4th channel = **Hue**.

# DMX Wireless Settings



The Select LED includes a built-in Lumen Radio receiver and can be operated wirelessly with a Lumen Radio transmitter (sold separately). DMX Wireless is an alternative to using DMX cables. Set DMX address as previously instructed on p 12. For more information on Lumen Radio Receiver/Transmitter, see [www.LumenRadio.com](http://www.LumenRadio.com).



### Enable

Enables wireless DMX. Default is **OFF**. Press the control knob to turn **Enable ON**. The following are examples of what will be seen in the main display when wireless DMX is Enabled:

- 1) **“R” with no signal bar**: Indicates wireless DMX is enabled, but there is no connection to a transmitter.
- 2) **“R” with signal bar**: Indicates wireless DMX is enabled; the fixture is connected to a transmitter, but no valid DMX is currently being transmitted.
- 3) **“RX” with signal bar**: Indicates wireless DMX is enabled; the fixture is connected to a transmitter and valid DMX is currently being transmitted.

All manual controls are disabled when wireless DMX is enabled.

### Unlink – Press 3 Sec

Press the control button for 3 seconds to unlink from wireless DMX transmitter.

### Status – Unlinked, Linking, Linked

This shows the status of the wireless connection. Default is Unlinked. When linking is initiated from the transmitter, the status will display Linking. Once connected, the status will change to Linked. If the fixture is linked to a transmitter that is not present, the status will show Linking.

### Signal

Indicates signal strength of wireless connection. In main display, up to 5 bars indicate signal strength.

**Note:** Controller must be powered on. In addition, the wireless transmitter must be connected to a DMX controller with a valid DMX output.

Tip: DMX fixtures without wireless capability can be daisy chained with DMX cables to the wireless fixture.

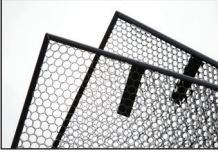


# Accessories



**DFS-SL30-H** Select 30 Flozier, Half

**DFS-SL20-H** Select 20 Flozier, Half



**LVR-SL390-P** Select 30 Louver/HP 90°

**LVR-SL360-P** Select 30 Louver/HP 60°

**LVR-SL290-P** Select 20 Louver/HP 90°

**LVR-SL260-P** Select 20 Louver/HP 60°



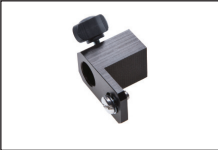
**MTP-KF41** Kino 41K Mount w/ 3/8" Pin (10mm)



**MTP-BF41S** Kino 41K Mount w/ Baby Receiver Short (16mm)



**MTP-BF41** Kino Offset w/ Baby Receiver (16mm)



**MTP-BAL** Kino Ballast Baby Mount (16mm)

# Cases



**BAG-SL30**

Select LED 30 Soft Case

**BAG-SL20**

Select LED 20 Soft Case



**KAS-DL30**

Select LED 30 Flight Case

**KAS-DL20**

Select LED 20 Flight Case



**KAS-SL32**

Gaffer LED 30 Ship Case (2-Unit)

**KAS-SL22**

Interview LED 20 Ship Case (2-Unit)



**KAS-SL33**

Select LED 30 Ship Case (3-Unit)

**KAS-SL23**

Select LED 20 Ship Case (3-Unit)

# Select LED Fixture Specifications



Select LED 30

**CFX-SL30** Select LED 30 Fixture

**Weight:** 12 lb (5kg)

**Dimensions:** 40.5 x 10.5 x 3.5" w/ 6.5" barndoors  
(103 x 27 x 9cm w/ 16.5cm barndoors)



Select LED 20

**CFX-SL20** Select LED 20 Fixture

**Weight:** 10 lb (4.5kg)

**Dimensions:** 26.5 x 13 x 3.5" w/ 6" barndoors  
(67 x 33 x 9cm w/ 15cm barndoors)

# LED Controller Specifications



Select LED 150  
DMX Controller

**LED-150X** Select LED 150 DMX Controller

**AC Input Voltage:** 100~240VAC 50/60Hz, 150W

**Amperage VAC:** 1.3A at 120VAC, 0.65A at 230VAC

**DC Input Voltage:** 18~36VDC, 150W

**Amperage VDC:** 7.0A at 24VDC

**Kelvin Range:** 2700K~6500K

**Dimming Range:** 100%~1%

**Weight:** 4.5 lb (2kg)

**Dimensions:** 14.5 x 4 x 3"

(37 x 10 x 8cm)

**FCC Part 15 Verification:**

This device complies with Part 15 of the FCC Rules. Operation is subject to the condition that this device does not cause harmful interference.

**FCC Part 15 Declaration of Conformity:**

This device complies with Part 15 of the FCC Rules. Operation is subject to the following two conditions: (1) this device may not cause harmful interference, and (2) this device must accept any interference received, including interference that may cause undesired operation.



KINO FLO, INC  
Select 30, Select 20  
ID: XRSCRMXTIMO101  
IC: 8879A-CRMXT101

For latest Warranty information and Certifications,  
see Kino Flo website at [www.kinoflo.com](http://www.kinoflo.com).

**Environmental: Disposal of Old Electrical & Electronic Equipment.**



This symbol on the product or on its packaging indicates that this product shall not be treated as household waste. This product is made of recyclable materials and should be disposed of in accordance with governmental regulations.

---

Kino Flo, Inc. 2840 N. Hollywood Way, Burbank, CA 91505, USA  
Tel: 818 767-6528 website: [www.kinoflo.com](http://www.kinoflo.com)