

MAGICBLADE-R



AYRTON
Digital Lighting

MAGICBLADE-R CREATIVE SOLUTIONS

MAGICBLADE™R is a new design that offers continuous double rotation on PAN/TILT axes. Its unique feature is the layout of its seven RGBW LED sources in-line, paired with the highly intensive angle of the optics, which allow the creation of light curtains with genuine overall consistency. On stage, MAGICBLADE™R's very high centre beam intensity enables excellent visual perception of the beams in an environment saturated with light - vital in the creation of virtual décor.

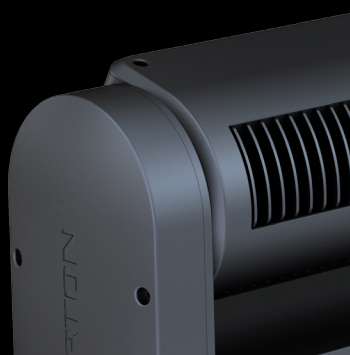
AYRTON™ has opted for a compact design for MAGICBLADE™R, with the primary objective of reducing the visual footprint of its luminaires. This allows MAGICBLADE™R to be installed in many unique positions and, coupled with the individual control of the 7 RGBW LED sources, enables the creation of a multitude of new effects.



MAGICBLADE™R integrates a fast 32-bit circuit board that has been developed to give highly flexible management of the numerous channels necessary for point-by-point control and for large scale installations utilising hundreds of luminaires.

MAGICBLADE™R benefits from extensive connectivity and can be controlled by DMX-RDM, Art-Net™ or via LumenRadio™ DMX-RDM wireless connection.

It is equipped with new generation three-phase stepper motors that allow quick and precise movement essential for its style of application. Very compact, these new motors fit perfectly into the minimalist design of the luminaire.





OPTICS

- Beam aperture: 4,5°
- 85% optic efficiency
- High-efficiency 67 mm PMMA optics

LIGHT SOURCE

- 7 multi-chip 15 Watt LED sources
- Light output: up to 2,500 lumen
- Luminous intensity: 262,500 cd
- Rated sources life: up to 50,000 hours
- Flicker free sources management, suitable for TV applications and all video recorded events

MOVEMENT

- Continuous PAN and TILT rotation
- Extremely accurate positioning
- Moving-head operated via either 8 or 16 bit resolution
- High-resolution stepper motors operated via microprocessors ensure extreme accuracy and smooth movements.
- PAN and TILT automatic repositioning

COLOURS

- Sophisticated 4 colours RGBW mixed, reaching high Colour Rendering Index
- Uniform light beam with no colour shadows, and rich saturated and pastel colour-hues
- 4.29 billion colours (8 bit resolution)
- Virtual colour wheel, including most usuals white colour temperature presets
- Dynamic colour macro effect with variable speed

DIMMER / STROBE

- Electronic dimmer, allowing perfect light adjustment from 0 to 100% without colour variation
- White or colour strobe effect, with speed adjustment from 1 to 25 flashes per second

SOFTWARE FACILITIES

- Local DMX addressing of the luminaire and its optional parameters through its built-in LCD panel control
- Remote DMX addressing of the luminaire and its optional parameters through a standard RDM DMX controller
- Built-in pattern effects with speed and fade controls for scenic applications
- Information menu including hour counter, temperature, software version

HARDWARE FACILITIES

- Graphic LCD display for addressing and special functions settings, with flip function
- 6 menu buttons to set the functions
- Over temperature protection
- Integrated LumenRadio™s wireless CRMX RDM receiver
- XLR 5 pin male and female connectors for DMX connection
- Ethercon RJ45 IN / OUT connectors for ArtNet & sACN connection
- PowerCON TRUE1 male and female connectors for power connection

CONTROL

- DMX 512 protocol, through DMX cable or wireless system
- DMX-RDM compatible
- Stand-alone mode and Master/Slave modes
- ArtNet & sACN protocol through Ethernet cable
- Local control panel, with LCD display
- Choice of 3 DMX modes (from 18 to 44 DMX channels)

POWER SUPPLY

- Electronic supply with active PFC
- 110 to 240 Volts - 50/60Hz
- Power 200 Watt max

COOLING SYSTEM

- Advanced cooling system
- Self adjusting variable speed fans for quiet operation (Auto mode)
- Selectable auto, stage & studio ventilation modes
- Safety protection against temperatures excesses

HOUSING

- Moving-head skeleton made of aluminium and steel metal plates
- Heatsinks in aluminium, satin finish
- Moulded covers in self-extinguishing fire retardant ABS PC (V0 class)
- Two sides handles for transportation
- Four strong wide feet for better stability
- IP20 protection rating
- Exterior finish: black (Carbon)

INSTALLATION

- Fastening brackets system: two Omega ¼ turn brackets designed for use with standard clamps
- Mounting points: two ¼ turn locking fittings allowing installation of Omega brackets on luminaire
- Safety cable attachment point

OPERATING PARAMETERS

- Operating positions: all (device on floor or fixed to a support)
- Maximum permitted ambient temperature (Ta max): 45°C (113°F)
- Minimum permitted ambient temperature (Ta min): -10°C (14°F)
- Minimum usage distance: 0.2 m (8 inches)

COMPLIANCE

EU (EMC)

- EN 55015 (2006) - EN 55015 A2 (2009)
- EN 61547 (2009) - EN 61000-3-2 (2006)
- EN 61000-3-2 A2 (2009) - EN 61000-3-3 (2008)

EU (LVD)

- EN 60598-1 (2008) - EN 60598-2-17 (1989)
- EN 60598-2-17 A2 (1991)

SIZE

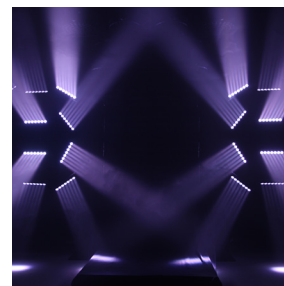
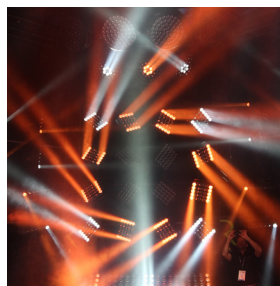
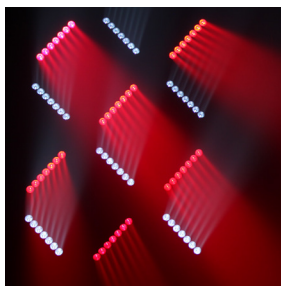
- Product: 571 x 266 x 184 mm (l x h x d)
- Flight-case foam: 625 x 295 x 250 mm (l x h x d)

WEIGHT

- Product: 12.1 KG

PRODUCT CODES

- 015250: MAGICBLADE-R CREATIVE SOLUTION





www.ayrton.eu