



# MAC Viper Wash DX

The MAC Viper Wash DX is a full-feature, full-range wash luminaire with a unique internal barndoor system (shutters) that enables designers to shape and control light projection onto stages, performers, scenery, scrims or any set element with great precision. The fixture's internal framing system makes it a highly capable, automated substitute for a conventional daylight Fresnel fixture.

The MAC Viper Wash DX features an outstanding quality of light with unlimited color choices and maintains near full efficiency throughout its entire zoom range with no visible beam jump when zooming from tight to wide. The fixture has adopted the compact form, impressive speed, superior light quality and beautiful colors that the MAC Viper Profile is renowned for and uses the same 1000-watt lamp.

33000 Lumens – Excellent light quality with a uniform field and 6000K color temperature

1:5 zoom - Continuous and fast

Internal barndoor system – 1 pair of indexing shutters

## FEATURES

- 33000 Lumens – Excellent light quality with a uniform field and 6000K color temperature
- 1:5 zoom - Continuous and fast
- Internal barndoor system – 1 pair of indexing shutters
- CMY – Vibrant color mixing with a superior palette of colors including true reds, rich ambers, primary green and deep blues
- Linear CTO – Daylight to tungsten CCT control and expansion of the CMY palette
- 7-slot color wheel – Static colors and correction filters for added color choice and bump effects
- Dimmer and shutter - Combined dimmer/shutter system with intensity effects, instant blackout/open and smooth fades
- Iris – Fast and tight iris with adjustable dynamic effects, complementing the barndoor system
- Diverse strobe effects

## TECHNICAL SPECIFICATIONS

### Physical

Length (base): 472 mm (18.6 in.)

Length (head): 566 mm (22.3 in.)

Width: 473 mm (18.6 in.)

Width (base): 335 mm (13.2 in.)

Height (head straight up): 732 mm (28.8 in.)

Height (maximum): 749 mm (29.5 in.)

Weight: 34.1 kg (75.2 lbs.)

Minimum center-to-center distance in side-by-side installation: 650 mm (25.6 in.)

### Dynamic Effects

Color mixing: CMY, independently variable 0 - 100%

Color temperature control: CTO, variable 6000 - 3200 K

Color wheel: 7 interchangeable dichroic filters + open, indexing, continuous rotation, random color

Beam shaping: Internal barn doors, continuously variable opening, indexed rotation

Iris: 0 - 100%, pulse effects

Mechanical dimmer/shutter: 0 - 100% continuous dimming, variable & random strobe & pulse effects, instant open & blackout

Dimming options: Choice of four dimming curves  
Zoom: Motorized  
Pan: 540°  
Tilt: 268°  
Position correction system: Absolute position monitoring

#### Control and Programming

DMX channels: 18/24  
Setting and addressing: Control panel with backlit graphic display and jog wheel or via DMX  
16-bit control: Dimmer, pan, tilt  
DMX compliance: USITT DMX512-A  
RDM compliance: ANSI/ESTA E1.20  
Receiver: Opto-isolated RS-485  
Firmware update: USB memory device or USB/DMX hardware interface over DMX link

#### Lamp

Type: 1000 W short-arc discharge  
Color temperature: 6000 K  
CRI (Color rendering index): >85  
Average lifetime: 750 hours  
Socket: PGJX36  
Ballast: Electronic  
Approved lamps: Osram HTI 1000/PS Lok-it, Philips MSR Gold MiniFastFit 1000W

#### Optics

Zoom range: 13.5° - 59° (1:5)  
Output: 33 000 lm

#### Service Utilities

Fixture identification: User-settable fixture ID number

#### Construction

Color(s): Black  
Housing: UV-resistant fiber-reinforced composite  
Reflector: Glass, cold light  
Protection rating: IP20

#### Installation

Mounting points: Eight quarter-turn locking points  
Orientation: Any  
Minimum distance to illuminated surfaces: 3.4 m (11.2 ft.)  
Minimum distance to combustible materials: 0.3 m (1.0 ft.)

#### Connections

AC power input: Neutrik PowerCon  
DMX and RDM data in/out: 5-pin locking XLR  
USB memory devices: USB host socket

#### Electrical

AC power: 120-240 V nominal, 50/60 Hz  
Power supply unit: Auto-ranging electronic switch-mode  
Typical half-cycle RMS inrush current: 16.2 A

#### Typical Power and Current

120 V, 60 Hz: 1225 W, 10.3 A, PF 0.999  
208 V, 60 Hz: 1190 W, 5.8 A, PF 0.996  
230 V, 50 Hz: 1186 W, 5.2 A, PF 0.994  
240 V, 50 Hz: 1194 W, 5.0 A, PF 0.993

*Measurements made at nominal voltage. Allow for a deviation of +/- 10%.:  
PF = power factor:*

#### Thermal

Cooling: Filtered forced air (temperature-regulated, low noise)  
Maximum ambient temperature (Ta max.): 40° C (104° F)  
Minimum ambient temperature (Ta min.): 5° C (41° F)  
Maximum surface temperature, steady state, Ta=40° C (104° F): 150° C (302° F)  
Total heat dissipation (calculated, +/- 10% at 120 V, 60 Hz): 4180 BTU/hr

#### Approvals

EU safety: EN 60598-2-17 (EN 60598-1), EN 62471  
EU EMC: EN 55015, EN 55103-1, EN 55103-2, EN 61547  
US safety (pending): UL 1573  
US EMC: FCC Part 15 Class A  
Canadian safety (pending): CSA E598-2-17 (CSA E60598-1)  
Canadian EMC: ICES-003 Class A  
Australia/NZ: C-TICK N4241

#### Included Items

Lamp (installed): P/N 97010346  
Two Omega clamp attachment brackets with 1/4-turn fasteners: P/N 91602001  
Safety and installation manual: P/N 35000258

#### Accessories

Power cable, 12 AWG, SJT, with Neutrik PowerCon NAC3FCA input connector, 3 m (9.9 ft.):

): P/N 11541503

Neutrik PowerCon NAC3FCA power input connector, cable mount, blue: P/N 05342804

Omega clamp attachment bracket with 1/4-turn fasteners: P/N 91602001

T-shaped omega clamp attachment bracket with 1/4-turn fasteners: P/N 91602008

Half-coupler (tube) clamp: P/N 91602005

G-clamp (suspension with yoke vertically downwards only): P/N 91602003

Quick-trigger clamp (suspension with yoke vertically downwards only): P/N 91602007

Safety cable, safe working load 50 kg (110.4 lbs.): P/N 91604003

Flightcase for 2 x MAC Viper: P/N 91510180

#### Related Items

Martin USB Duo™ DMX Interface Box: P/N 90703010

Martin RDM 5.5 Splitter™: P/N 90758150

#### Spare Parts

Osram HTI 1000/PS Lok-it lamp: P/N 97010346

Air filter, head, MAC Viper (sold in multiples of 12): P/N20800270

#### Ordering Information

MAC Viper™ Wash DX in cardboard box: P/N 90233070

MAC Viper™ Wash DX in 2-unit flightcase: P/N 90233080

#### Shipping Information

In cardboard carton:

Shipping dimensions (LxWxH): 580 x 450 x 870 mm (22.9 x 17.8 x 34.3 in.)

Shipping weight: 39 kg (86.0 lbs.)

Quantity on pallet: 8 fixtures

Pallet dimensions (LxWxH): 1200 x 1000 x 1860 mm (47.3 x 39.4 x 73.3 in.)

Pallet weight (incl. pallet): 334 kg (736.4 lbs.)

In double flightcase:

Shipping dimensions (LxWxH): 1200 x 580 x 850 mm (47.3 x 22.9 x 33.5 in.)

Shipping weight: 70 kg (154.4 lbs.)

Quantity on pallet: 4 fixtures

Pallet dimensions (LxWxH): 1200 x 1220 x 1010 mm (47.3 x 48.1 x 39.8 in.)

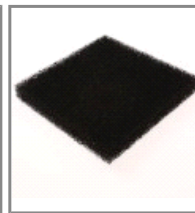
Pallet weight (incl. pallet): 302 kg (665.8 lbs.)



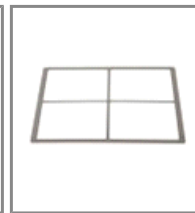
#### A C C E S S O R I E S



3m pwr.cable  
w.PwrCon  
NAC3FCA, AWG12  
SJT  
P/N: 11541503



Air filter  
P/N: 20800280



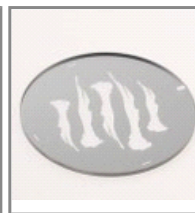
Filter support plate  
P/N: 23821750



Flightcase for 2 x  
MAC Viper  
P/N: 91510180



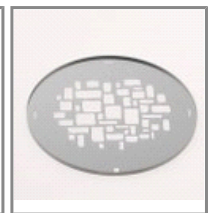
G-Clamp  
P/N: 91602003



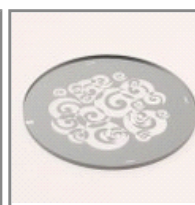
Gobo, Big Bones,  
D37.5/d27, hm  
glass  
P/N: 43092009



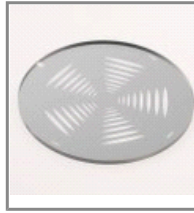
Gobo, Bite It,  
D37.5/d27, hm  
glass  
P/N: 43092011



Gobo, Brick It,  
D37.5/d27, hm  
glass  
P/N: 43092008



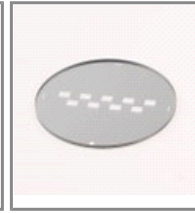
Gobo, Dots In  
Space, D37.5/d27,  
hm glass  
P/N: 43092005



Gobo, Happy,  
D37.5/d27, hm  
glass  
P/N: 43092006



Gobo, Limbo  
Crystal, D37.5,  
tex. glass,  
P/N: 62325150



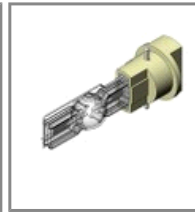
Gobo, Sonar,  
D37.5/d27, hm  
glass  
P/N: 43092002



Gobo, Symmetrical  
Leggings,  
D37.5/d27, h  
P/N: 43092010



Gobo, Too Many  
Doctors,  
D37.5/d27, hm gl  
P/N: 43092001



Gobo, Zip It,  
D37.5/d27, hm  
glass  
P/N: 43092017



Half-coupler  
clamp for Ø50  
P/N: 91602005



Omega bracket  
with 1/4 turn  
fasteners  
P/N: 91602001



Osram HTI  
1000/PS Lok-it  
P/N: 97010346



PowerCon  
NAC3FCA Power  
Input Connector  
P/N: 05342804



Quick-trigger  
clamp Ø38.1-  
51mm  
P/N: 91602007



Safety wire, 50kg  
SWL  
P/N: 91604003



T-shape Omega  
bracket w 1/4 turn  
P/N: 91602008

